

# •CULTIVATION•

The Newsletter for The Southwest Center for Agricultural Health, Injury Prevention and Education

Editor: Jeffrey L. Levin, M.D., M.S.P.H.

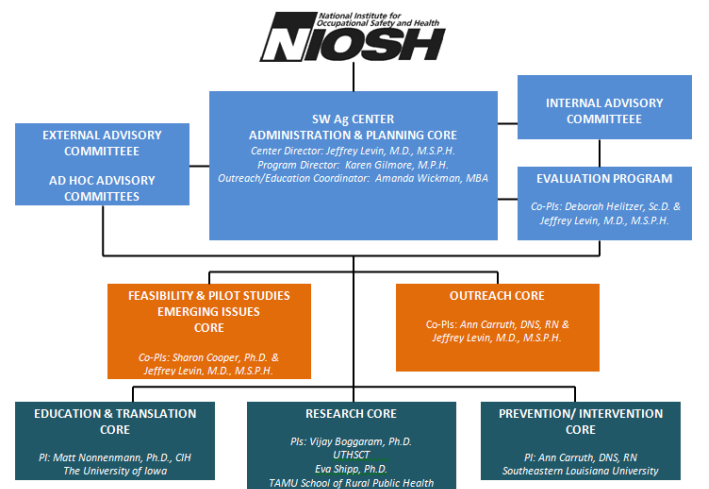
agcenter@uthct.edu



## From the Director...

### What's in a Center

The organizational structure for the SW Ag Center is designed to facilitate the integration of cross-disciplinary expertise, keep the center forward-looking, and exercise good stewardship. At the heart of the matrix is the Administrative and Planning (A-P) Core, one of three Center-based Cores. The A-P Core is the functional communication hub that facilitates integration of effort across Cores and projects, promotes synergy between established projects and the Feasibility/Pilot Studies and Emerging Issues Program (F/PS and EI), and advances the Outreach Program. The Internal Advisory Committee (IAC) supports the organizational framework and infrastructure that guides management functions. Ten regional experts comprise the External Advisory Committee which provides feedback to Center staff and project scientists. Center advisors and PIs represent 18 academic and other organizations from all five states in the region. Their breadth of knowledge allows the Center to identify issues for future research projects, feasibility studies, and outreach activities.



Structured communication and integrated participation are key to capitalize on partners' expertise and stay relevant in a very busy environment. For example, the Center recently met with several Principal Investigators at the National Center for Farmworker Health in Buda, Texas to share project updates and new project summaries with George Conway, MD, Director of the NIOSH AFF Program. By regularly engaging a diverse group of committed individuals, the Center can leverage resources for a greater impact.



## Meet the Advisory Board Featured Member: Francisco Soto Mas, MD, Ph.D.

Francisco Soto Mas, MD, Ph.D., is an Associate Professor of Health Education in the Department of Teacher Education at the University of Texas at El Paso. He has a medical degree from the University of Granada, Spain, a Ph.D. in Health Promotion from the University of New Mexico, and a Master's in Public Health from the University of Arizona. Dr. Soto Mas has more than 20 years of

professional experience in medicine and public health as a practitioner, researcher, and academician. His areas of expertise include chronic disease prevention and control, program planning and evaluation, health behavior theory, Latino health issues, bioterrorism, and health communication and health literacy. Dr. Soto Mas was connected to the Center through long time partner, Deborah Helitzer, Sc.D. The Center looks forward to applying Dr. Soto Mas's broad experience into research projects and outreach endeavors.



Fall 2011

## SW Ag Center receives Grant from Houston Livestock Show & Rodeo

The SW Ag Center recently received a grant from the Houston Livestock Show and Rodeo to support duplication and dissemination of *Right from the Start: Safety Awareness for the Next Generation of Livestock Producers*. In addition, the grant will support the development of an instructor's guide for Right from the Start. Agriculture Science teachers will be the target audience for the upcoming dissemination.

The instructor's guide will be pilot tested with FFA, 4-H, and Ag Science classes in Texas. If you would like to participate, please contact Amanda at 903-877-5998 or by email to [amanda.wickman@uthct.edu](mailto:amanda.wickman@uthct.edu).

## Right from the Start Receives Outstanding Program Award

*Right from the Start: Safety Awareness for the Next Generation of Livestock Producers* received the Outstanding Program Award from the Texas Rural Health Association. Pictured below accepting the award: Amanda Wickman, MBA, SW Ag Center Outreach Education Coordinator and Ron Gill, Ph.D., Professor and Extension Livestock Specialist for Texas AgriLife Extension Service. The award was presented by Paula Winkler, THRA Board Member.



## Feasibility/Pilot Study Program— Application Opportunity

The small grants program of the SW Ag Center provides an opportunity to make a positive impact on the health and safety of workers in the AFF sector by 1) encouraging new researchers (career builder or experienced researchers new to agricultural issues) to generate data that validates innovative research, education, intervention or application of previous research to workplace use; 2) engaging young researchers to apply proven approaches to a novel AFF sector population of workers; 3) establishing mentoring relationships between new and established scientists to build capacity for AFF research careers; and/or 4) generating data to support larger studies in the future. Successful small grant proposals will address the mission and principles of the SW Ag Center published on the Center's website <http://www.swagcenter.org>.

Sharon Cooper, Ph.D., Regional Dean for the UT-Houston School of Public Health San Antonio Re-

gional campus and Center Director Jeffrey Levin, M.D., M.S.P.H. are Co-PIs for this program effort. They will guide the process of identifying mentors and facilitating the relationship with successful PIs.

To foster cross-disciplinary research, the SW Ag Center will convene a virtual workshop for graduate students and junior faculty from various disciplines who are interested in developing a small grant proposal. The workshop will be held in early 2012. Details about the workshop will be provided in the next issue of Cultivation and posted on the Center's website; Interested candidates may contact Karen Gilmore [karen.gilmore@uthct.edu](mailto:karen.gilmore@uthct.edu) or (903) 877-5896 to be added to the information distribution list for the feasibility/pilot study program.

## Calendar

### October 18-20

The Fifth National Occupational Injury Research Symposium,  
NOIRS 2010  
Morgantown, WV  
<http://www.cdc.gov/niosh/noirs/2011/>

### October 20-22

24th Annual East Coast Migrant Stream Forum  
West Palm Beach, FL  
[http://www.ncchca.org" rel="external"](http://www.ncchca.org)

### October 24-28

National Association of Extension 4-H Agents  
Omaha, NE  
<http://nae4ha.com/>

### October 28-30

National Rural Educators Association  
Hilton Head Island, SC  
<http://www.nrea.net/index.cfm?PID=3056>

### October 29-November 2

American Public Health Association  
Washington, DC  
[http://www.apha.org/meetings/contact" rel="external"](http://www.apha.org/meetings/contact)

### October 30-November 4

National Safety Council Congress & Expo  
Philadelphia, PA  
<http://congress.nsc.org>

### November 7-10

National AgrAbility Training Workshop  
Indianapolis, IN  
[www.agrability.org](http://www.agrability.org)

### November 8-10

**Master Trainer Workshop for Safe Tractor  
Certification  
Norman, OK  
Contact Amanda at [amanda.wickman@uthct.edu](mailto:amanda.wickman@uthct.edu)**

### November 10-12

21st Annual Midwest Stream Farmworker Health Forum  
Albuquerque, NM  
[www.ncfh.org](http://www.ncfh.org)

### November 15, 2011

Webinar: Can You Hear Me? An Introduction to Hearing Loss  
Prevention in Agriculture. For information contact Jose Lainez  
at [jlainez@cdc.gov](mailto:jlainez@cdc.gov).

### November 16-17

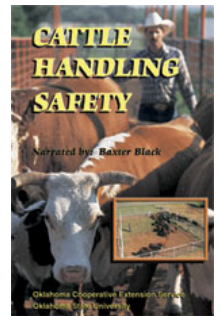
2011 Midwest Rural Agricultural Safety and Health Forum  
Des Moines, IA  
<http://cph.uiowa.edu/icash/events/MRASH/2011/>

### December 7-8, 2011

Rural Multiracial and Multicultural Health Conference  
Daytona Beach, FL  
[http://www.ruralhealthweb.org/mm" rel="external"](http://www.ruralhealthweb.org/mm)

### January 26, 2012

Agricultural Safety and Health Council of America Workshop  
and Annual Meeting  
Washington, DC  
[www.ashca.com](http://www.ashca.com)



**The SW  
Ag Center is on  
YouTube!**

Click [HERE](#) to access the videos  
from our website.